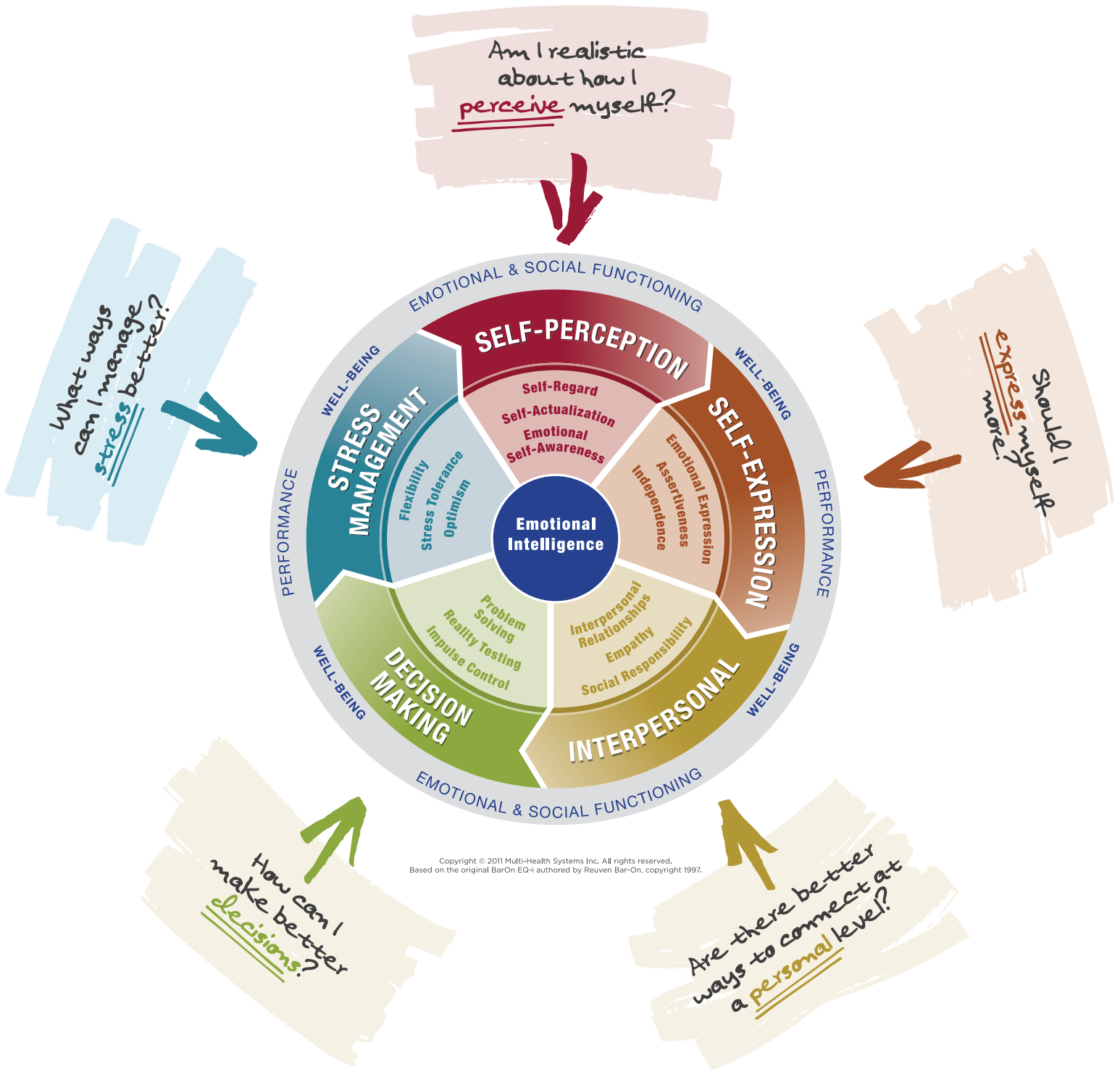


# THE EQ-i 2.0<sup>®</sup> MODEL



Copyright © 2011 Multi-Health Systems Inc. All rights reserved.  
Based on the original BarOn EQ-i authored by Reuven Bar-On, copyright 1997.

## THE EQ-i 2.0<sup>®</sup> FEATURES

- A Total EI score with 5 composite scores measuring 5 distinct aspects of emotional and social functioning.
- 15 Subscales.
- A Well-Being Indicator that measures your client's level of happiness; resulting in additional development opportunities.